

If you're living with
hypoparathyroidism*...

Your Path Starts Here

*Low parathyroid hormone.

IMPORTANT SAFETY INFORMATION AND USE

What is YORVIPATH[®] used for?

YORVIPATH is a prescription medicine used to treat adults with low parathyroid hormone (PTH) (hypoparathyroidism).

- It is not known if YORVIPATH is safe and effective in people who have been recently diagnosed with hypoparathyroidism after surgery, or if it is started in people with low levels of calcium in the blood.
- It is not known if YORVIPATH is safe and effective in children.
- YORVIPATH should not be used in children and young adults whose bones are still growing.

Please see Important Safety Information throughout and accompanying full Prescribing Information for YORVIPATH and the Medication Guide.

About hypoparathyroidism (HypoPara)

How parathyroid hormone (PTH) works in the body

PTH is produced by the parathyroid glands and keeps calcium at normal levels by enabling the body to:



Release calcium from the bones



Move calcium from the kidneys to the bloodstream



Increase the amount of calcium absorbed from food in the small intestine

What is HypoPara?

HypoPara is a rare disease defined by absent or low levels of PTH in the body. It most commonly results from neck surgery, but it can also have a genetic, autoimmune, or other unknown cause.

Why is “conventional therapy” used in HypoPara?

Conventional therapy consists of oral calcium and active vitamin D:

- **Oral calcium** is taken to address the low calcium levels in HypoPara
- **Active vitamin D** helps the body absorb calcium

Recognize the symptoms of low or high blood calcium levels

Even with conventional therapy, you may still experience unpredictable episodes of low or high calcium levels. Becoming familiar with these symptoms can help you better recognize changes in your blood calcium levels.



Low blood calcium levels

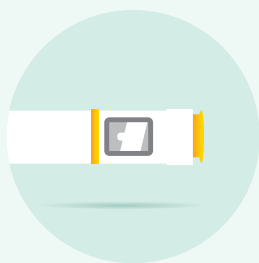
Tingling in your fingertips, toes, lips, or tongue
Muscle spasms or cramps
Oral numbness
Depression
Problems with thinking or remembering
Abnormal heart rhythms
Seizures



High blood calcium levels

Nausea
Vomiting
Dizziness
Feeling thirsty
Confusion
Muscle weakness
Irregular heartbeat

YORVIPATH® delivers active PTH with proven results



YORVIPATH is a ready-to-use, once-daily injection, allowing for 24-hour exposure to active PTH

68.9% (42 out of 61) of people with HypoPara who took YORVIPATH in a clinical study maintained normal blood calcium levels while achieving independence from oral calcium and active vitamin D*

IMPORTANT SAFETY INFORMATION AND USE

What is the most important information I should know about YORVIPATH?

YORVIPATH may cause serious side effects, including:

- **High levels of calcium in the blood (hypercalcemia).** YORVIPATH can cause some people to have higher blood calcium levels than normal. Your healthcare provider should check your blood calcium before you start and during your treatment with YORVIPATH. Tell your healthcare provider right away if you have nausea, vomiting, dizziness, feeling thirsty, confusion, muscle weakness, or irregular heartbeat. Hypercalcemia is more likely to occur within the first 3 months of starting YORVIPATH, but it may occur at any time.
- **Low levels of calcium in the blood (hypocalcemia).** People who stop using, miss, or change a dose of YORVIPATH may have an increased risk of low blood calcium levels, but hypocalcemia may occur at any time. Tell your healthcare provider right away if you have tingling in your fingertips, toes, lips or tongue, muscle spasms or cramps, oral numbness, depression, have problems thinking or remembering, abnormal heart rhythms, or seizures.

Please see Important Safety Information throughout and accompanying full Prescribing Information for YORVIPATH and the Medication Guide.

In a clinical study, people on YORVIPATH reduced the average number of active vitamin D and calcium pills taken daily—from about 6½ pills to a ½ pill by month 6*



*In a 26-week clinical study that compared once-daily YORVIPATH with a placebo injection in 82 adults with hypoparathyroidism. All people started on conventional therapy (active vitamin D and calcium), which could be adjusted during the study based on their blood calcium levels.

IMPORTANT SAFETY INFORMATION AND USE

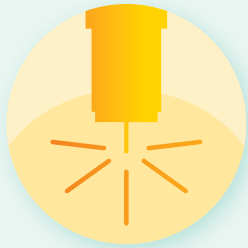
- **Possible bone cancer (osteosarcoma).** Tell your healthcare provider right away if you have pain in any areas of your body that does not go away or any new or unusual lumps or swelling under your skin that is tender to touch. These are some of the signs and symptoms of osteosarcoma and your healthcare provider may need to do further tests.

Who should not take YORVIPATH?

Do not use YORVIPATH if you are allergic to palopegteriparatide or any of the other ingredients in YORVIPATH.

Yorvipath®
palopegteriparatide
Injection 300 mcg/mL

Proven safety in a ready-to-use pen



Injection site reactions were the most common side effect of YORVIPATH® in a 26-week clinical study

- Other side effects included a drop in blood pressure or lightheadedness when standing up, headache, diarrhea, back pain, high calcium levels, and sore throat
- No one stopped taking YORVIPATH due to side effects

While on YORVIPATH, you may experience signs and symptoms of low or high blood calcium levels (described on page 3 of this brochure) and should discuss these with your healthcare provider

IMPORTANT SAFETY INFORMATION AND USE

What should I tell my healthcare provider before taking YORVIPATH?

Before using YORVIPATH, tell your healthcare provider about all of your medical conditions, including if you:

- are at higher risk of a type of bone cancer called osteosarcoma. This is especially important:
 - if you have a bone disease that increases your risk of developing osteosarcoma (including if you have Paget's disease).
 - if a blood test shows that you have unexplained increases in bone alkaline phosphatase.

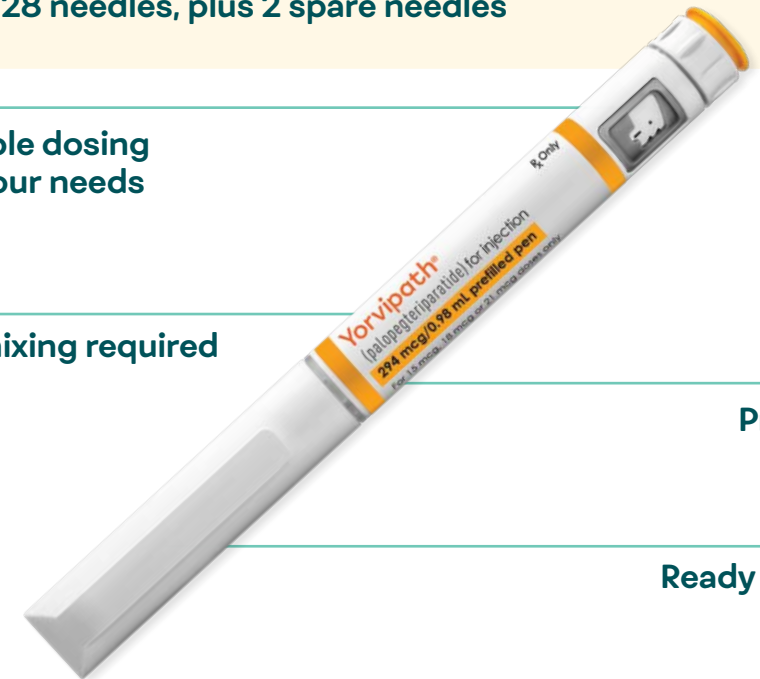
Please see Important Safety Information throughout and accompanying full Prescribing Information for YORVIPATH and the Medication Guide.

Ready upon arrival

Each package comes with 2 YORVIPATH pens and 28 needles, plus 2 spare needles

Flexible dosing for your needs

No mixing required



Prefilled

Ready to use

IMPORTANT SAFETY INFORMATION AND USE

- if you have cancer of the bones or other cancer that has spread to your bones.
- if you are having or have had radiation therapy to the skeleton.
- if you are affected with a condition that runs in your family that can increase your chance of getting cancer in your bones.

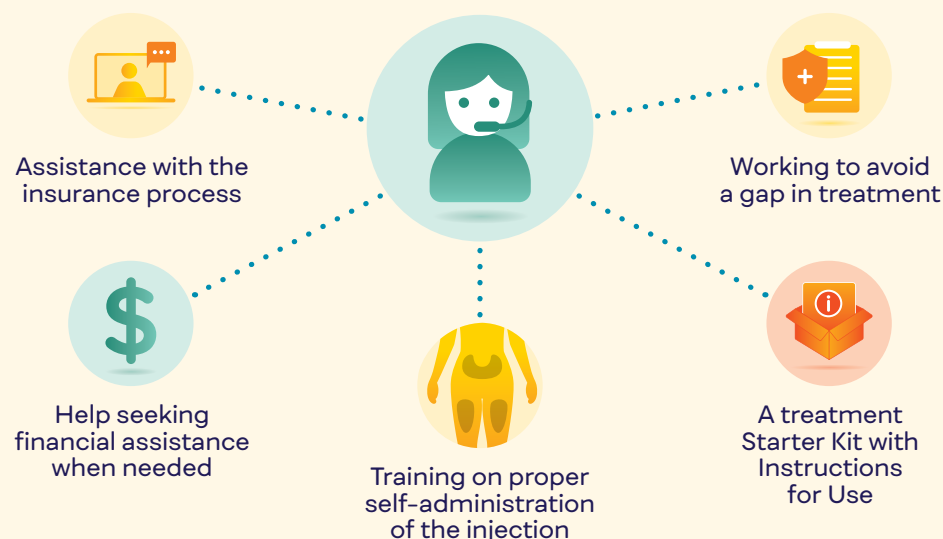
Yorvipath®
paleopecteriparatide
Injection 300 mcg/mL

The Ascendis Signature Access Program® (A·S·A·P)

How A·S·A·P supports you

A·S·A·P is a program that offers help with starting treatment, insurance issues, and staying on track throughout your treatment.* With A·S·A·P, you have a Nurse Advocate to answer your questions.

Once enrolled, support may include:



IMPORTANT SAFETY INFORMATION AND USE

Before using YORVIPATH, tell your healthcare provider about all of your medical conditions, including if you: (cont'd)

- take medicines that contain digoxin, are used to treat osteoporosis, or can affect calcium levels in your blood.
- are pregnant or plan to become pregnant. It is not known if YORVIPATH will harm your unborn baby. Tell your healthcare provider if you become pregnant during treatment with YORVIPATH.

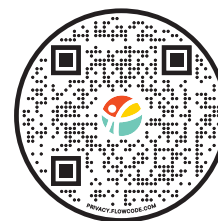
Please see Important Safety Information throughout and accompanying full Prescribing Information for YORVIPATH and the Medication Guide.

For personalized support or to learn more, call **1-844-442-7236** (available from 8 AM to 8 PM ET, Monday through Friday) and follow the prompts to reach A·S·A·P.

A·S·A·P
ASCENDIS SIGNATURE
ACCESS PROGRAM®

Co-Pay Program†

If you are commercially insured, you may qualify for assistance to pay for YORVIPATH® through the Co-Pay Program. If eligible, you can pay as little as **\$5 per monthly prescription**, up to a maximum benefit of \$12,000 per calendar year.† Scan the QR code below to learn more and see the terms and conditions.



Visit Yorvipath.com/support-services/ to discover what the support program has to offer!

*The A·S·A·P program provides patient support services to eligible patients who were prescribed YORVIPATH for its approved indication.

†Terms and conditions apply.

IMPORTANT SAFETY INFORMATION AND USE

- are breastfeeding or plan to breastfeed. It is not known if YORVIPATH passes into your breast milk. Talk to your healthcare provider about the best way to feed your baby during treatment with YORVIPATH.

Tell your healthcare provider about all the medicines you take, including prescription and over-the-counter medicines, vitamins, and herbal supplements. YORVIPATH and other medicines may affect each other causing side effects.

Yorvipath®
palopegteriparatide
Injection 300 mcg/mL

Notes for your next doctor's visit

Throughout your treatment, if you have questions or concerns about your medication or how you are feeling, please talk with your healthcare provider

Please see Important Safety Information throughout and accompanying full Prescribing Information for YORVIPATH and the Medication Guide.

IMPORTANT SAFETY INFORMATION AND USE

What are the possible side effects of YORVIPATH?

YORVIPATH may cause serious side effects:

- **Allergic (hypersensitivity) reaction, including anaphylaxis.** Stop taking YORVIPATH and tell your healthcare provider or get emergency medical help right away if you have swelling of your face, lips, mouth, or tongue, breathing problems, fainting, dizziness, feeling lightheaded (low blood pressure), fast heartbeat, itching, rash, or hives.
- **Decrease in blood pressure when you change positions (orthostatic hypotension).** Some people may feel dizzy, get a fast heartbeat, or feel light-headed right after injecting YORVIPATH. For the first few doses, give your injection of YORVIPATH in a place where you can sit or lie down right away if you get these symptoms. If your symptoms get worse or do not go away, contact your healthcare provider before you continue using YORVIPATH.
- **Digoxin toxicity if you are using digoxin and YORVIPATH at the same time.** Tell your healthcare provider if you experience irregular heart rhythm, heart palpitations, confusion, loss of appetite, nausea, vomiting, diarrhea, or vision problems.

The most common side effects of YORVIPATH include injection site reactions, vasodilatory signs or symptoms such as a drop in blood pressure or lightheadedness when standing up, headache, diarrhea, back pain, high calcium levels, and sore throat.

These are not all of the possible side effects of YORVIPATH. Call your doctor for medical advice about side effects. **You are encouraged to report side effects to FDA at 1-800-FDA-1088 or at www.fda.gov/medwatch. You may also report side effects to Ascendis Pharma at 1-844-442-7236.**



Treat HypoPara with YORVIPATH®



Talk with your healthcare provider to see if YORVIPATH is right for you



To learn more, visit [YORVIPATH.com](https://www.yorvipath.com)

Discover how YORVIPATH can make a difference for people living with HypoPara

IMPORTANT SAFETY INFORMATION AND USE

What are the possible side effects of YORVIPATH?

YORVIPATH may cause serious side effects:

- **Allergic (hypersensitivity) reaction, including anaphylaxis.** Stop taking YORVIPATH and tell your healthcare provider or get emergency medical help right away if you have swelling of your face, lips, mouth, or tongue, breathing problems, fainting, dizziness, feeling lightheaded (low blood pressure), fast heartbeat, itching, rash, or hives.

Please see Important Safety Information throughout and accompanying full Prescribing Information for YORVIPATH and the Medication Guide.



© October 2024 Ascendis Pharma Endocrinology, Inc.
All rights reserved. YORVIPATH®, Ascendis Signature Access Program®, Ascendis®, the Ascendis Pharma logo and the company logo are trademarks owned by the Ascendis Pharma Group. US-COMMPH-2400068 10/24

Yorvipath®
palopegteriparatide
Injection 300 mcg/mL